

**FOR LEASE**

# High Touch Building

120 S. Main St, Wichita KS 67202

BROKERAGE  
CONNECTION

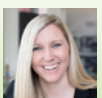
**InSite**  
REAL•ESTATE•GROUP



## PROPERTY INFO

Lease Rate: \$12.50/SF  
Lease Type: Full Service  
Available Space: 3,635 SF

- ✓ Signage opportunities
- ✓ Located in the heart of Central Business District in downtown Wichita
- ✓ Single tenant office building



Kristin Stang, CCIM  
kstang@insitere.com

(316) 518-9399

608 W. Douglas #106, Wichita KS

**InSite**  
REAL•ESTATE•GROUP



**FOR LEASE**

# High Touch Building

120 S. Main St, Wichita KS 67202

BROKERAGE  
CONNECTION

**InSite**  
REAL ESTATE GROUP



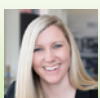
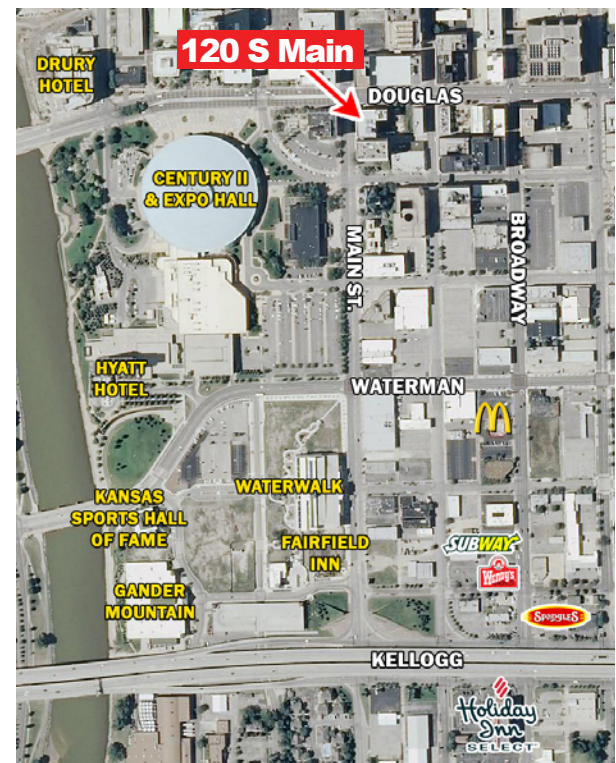
## AREA INFO

Located near Main & Douglas; the High Touch building borders Century II, the Historical Museum, the Wichita Central Library, and Heritage Square Park.

This location on Main St is easy to find and quick to get on and off of Kellogg/Highway 54.

The building is within walking distance of Intrust Bank Arena, the Orpheum Theater, and the new baseball stadium development.

Annual festivals include the Tallgrass Film Festival, Riverfest, Wagonmasters Chili Cookoff and Automobilia. First Fridays, Ballet Wichita and the Wichita Symphony host events monthly.



Kristin Stang, CCIM  
kstang@insitere.com

(316) 518-9399

608 W. Douglas #106, Wichita KS

**InSite**  
REAL ESTATE GROUP